

**HT16u (Humidity-Temperature)**



# **User Guide**

**Masibus Automation And Instrumentation Pvt. Ltd.**

B/30, GIDC Electronics Estate,

Sector-25, Gandhinagar-382044, Gujarat, India

☎ +91 79 23287275-79    🖨 +91 79 23287281-82

Email: [support@masibus.com](mailto:support@masibus.com)

Web: [www.masibus.com](http://www.masibus.com)

## Contents

1.	Revision History .....	3
2.	Introduction.....	4
3.	Software Installation Guide .....	5
3.1	System Requirement .....	5
3.2	Steps to install SMART-HT.....	6
4.	Basic Operation.....	9
4.1	Starting the Software.....	9
4.1.1	Startup Screen .....	9
4.1.2	User Login .....	9
4.1.3	Getting Started .....	10
4.2	Menus and Toolbar.....	12
4.2.1	File Menu .....	12
4.2.2	Edit Menu.....	13
4.2.3	User Menu .....	14
4.2.4	System Menu.....	15
4.2.5	Tools Menu .....	16
4.2.6	Connect Device .....	16
4.2.7	HT16u Time .....	16
4.2.8	Device Configuration .....	16
4.2.9	Retrieve Batch Data .....	16
4.2.10	Audit Report.....	17
4.2.11	Logout .....	17
4.2.12	Demo .....	17
4.2.13	System Time.....	17
4.2.14	Operate .....	17
4.2.15	Help .....	17
4.3	Task Bar Information .....	18
5.	SMART-HT Trend.....	19
6.	SMART-HT Report .....	20
7.	Software License Agreement.....	21
8.	Contact Information.....	23

## 1. Revision History

---

-----  
SMART-HT V 1.0.0.0  
November 20, 2018  
-----

Initial Release

## 2. Introduction

---

SMART-HT is a windows based software, which supports Masibus HT16u device products. It provides true data collection and monitoring function; such collected data will be view in tabular, graph, zoom observation, and dynamic transfer to file without any need for annoying programming.

Its unique concept combines three key functions (Configuration, Downloading Data and Reporting), which position SMART-HT as the most convenient solution. Software is design to streamline the process of downloading data and reviewing it in a user-friendly, time efficient manner. The software offers many customizable features and options, software includes reports, and displays like tabular and trend.

The main requirements of 21 CFR Part 11 are data security, data integrity, traceability/audit trails and electronic signatures. Data security and data integrity are maintained by requiring users to login with a valid user name and password. There are then permission tables that delineate what a user has access to and what that user has the ability to do. Anything that is done with the data is logged to the audit trail, thus maintaining the integrity of the data. Capturing the – who, what, when, and why of data modifications is the requirement of the traceability/audit trails requirement. This data is captured automatically and includes the user name, the date and time, and what was modified. The data is not captured is why the data was modified. This data cannot be modified. It is all permanent and readily available in human readable format.

**SMART-HT meets the functional requirements for the use of electronic records and electronic signatures.**

The Masibus recommendations for the software architecture, conception, and configuration will assist users in achieving compliance.

**Thank you for choosing SMART-HT.**

## 3. Software Installation Guide

---

### 3.1 System Requirement

Before you install the application, verify that you have at least the following.

#### Hardware

<b>Computer Processor:</b>	Pentium III / Celeron 866 MHz (or equivalent) or later (32-bit) Recommended (Pentium 4M (or equivalent) or later (32-bit)) Pentium 4 G1 (or equivalent) or later (64-bit)
<b>Memory:</b>	1 GB RAM (recommended 2 GB) and 1.8GHz processor or better
<b>Hard Disk Space:</b>	5 GB of available hard disk space
<b>Screen Resolution:</b>	Resolution should be set at 1280 x 768 Pixels (recommended 1366 x 768)
<b>Color Palette:</b>	Software contains 16-bit color graphics. It requires a minimum color palette setting of 16-bit color.

#### Software

<b>Operating System:</b>	Windows 10/8.1*/7 SP1** Windows Server 2012 R2* Windows Server 2008 R2 SP1**
--------------------------	--

\* Software installs VC2015 Runtime and .NET 4.7.1. Windows 8.1 and Windows Server 2012 R2 require Microsoft updates to support these items. Refer to Microsoft KB2919442 and KB2919355 for more information about how to install these updates.

\*\* Software is signed with a SHA-256 certificate. Windows 7 SP1, Windows Embedded Standard 7 SP1, and Windows Server 2008 R2 SP1 require Microsoft updates to support SHA-256. Refer to Microsoft KB3033929 for more information about how to install this security update.

#### Additional Software Requirement:

Acrobat Reader 10 or higher version  
Microsoft .NET Framework 4.7.1 or higher version required  
Microsoft Visual C++ 2015(x86) Redistributable Package

#### NOTE: The following list describes restrictions for using software on windows:

- You cannot access software using a guest account on windows.
- Although the software is designed to work with the windows operating systems listed above, software cannot guarantee operation on OS's no longer supported by Microsoft support life cycle policy.
- If Windows Update is enabled, the installation process might hang if Windows Update interferes with the installation of Microsoft Visual C++ Redistributable Package.
- If you purchased this software, use the installation media that shipped with your purchase to install this software.
- Software does not support and will not install or run on windows 2000 / NT / Me / 98 / 95 / XP / windows vista / Windows 7 RTM (with no service pack).

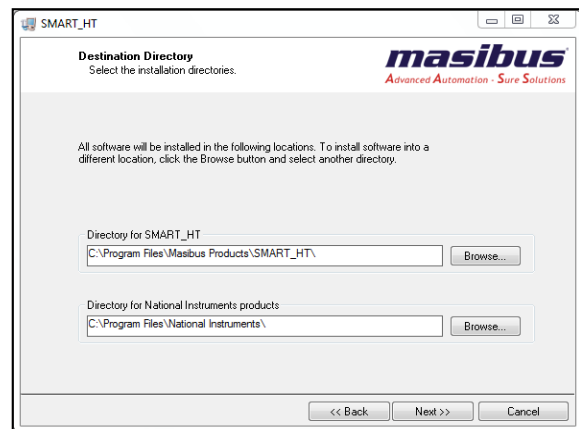
### 3.2 Steps to install SMART-HT

#### 1) Installing SMART-HT Software

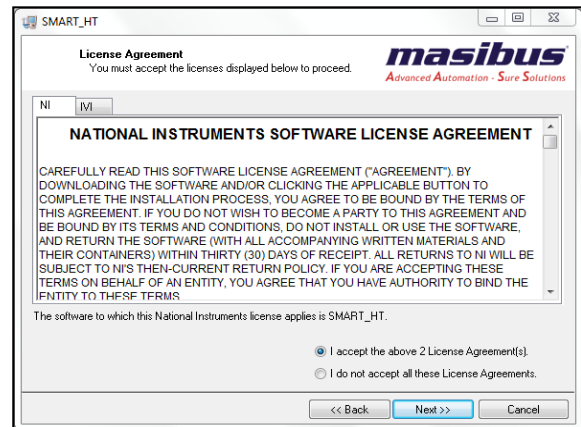
- To install the software from a drive, insert the installation source disk into the CD drive, **setup.exe** file is available in the **Setup\Volume\** directory as shown in below image.
- Before starting the software installation, you must be logged in as a user with administrative privileges for installing and configuring software applications. Make sure that no other programs are running, save your work, and close any open applications.

bin	05-11-2018 11:43	File folder	
license	05-11-2018 11:43	File folder	
supportfiles	05-11-2018 11:43	File folder	
nidist.id	05-11-2018 11:40	ID File	1 KB
readme.rtf	05-11-2018 11:30	Rich Text Format	51 KB
setup.exe	16-10-2017 09:11	Application	1,432 KB
setup.ini	05-11-2018 11:40	Configuration sett...	32 KB

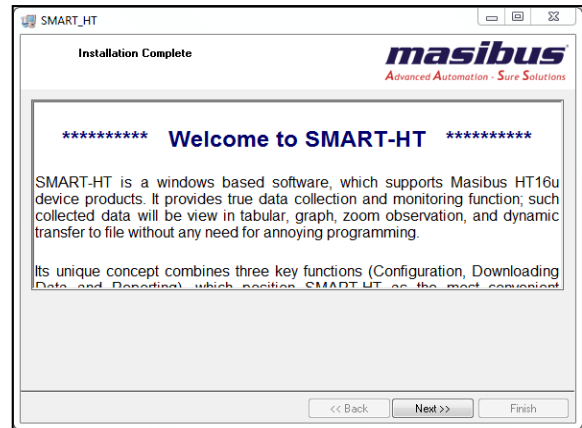
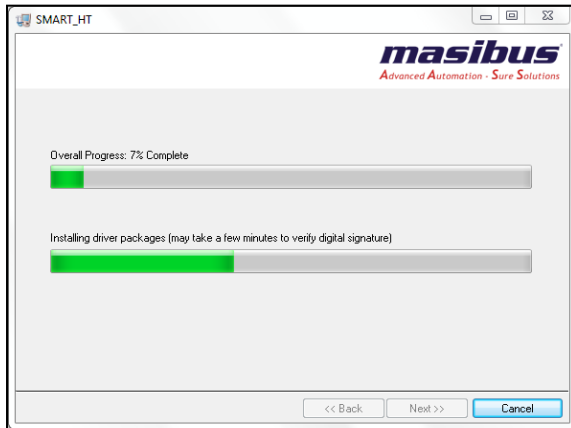
- Double-click the **setup.exe** (*application*) to launch the installer options, when the installation welcome screen appears, click **Next** for the installation directory screen. The user can change the installation folder, if required. It is recommended to keep it at the default and then click on the **Next**.



- Installer will appears masibus and national instruments software license agreements. Read the license agreement and accept it.



- When accepting both the license agreement respectively, click on the **Next** twice and start the installation as shown in next screen 1. The following dialog box will appear when the software has been successfully install as shown in screen 2.



- Soft Dog USB Driver and Microsoft .NET Framework 4.7.1 are install by default with the Standalone installation of SMART-HT if no such instance is detect during the installation.

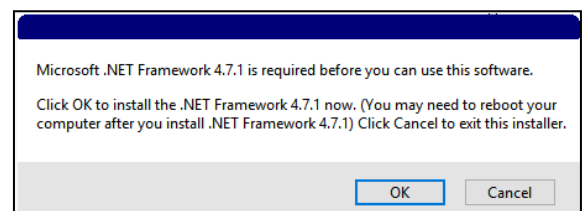
2) **Installing Soft Dog Driver** - Click on **Next**, SMART-HT License Hardware Key driver installation window will appear. It is recommended installing driver for license key.

**NOTE:** User need to select USB Dog driver (for USB Port in PC) OR Parallel Dog Driver (For Parallel Port in PC). After selecting proper driver click on the **Install Driver**, it will start the installation, when installation is completed driver installation, status window will appear, click **Exit**.

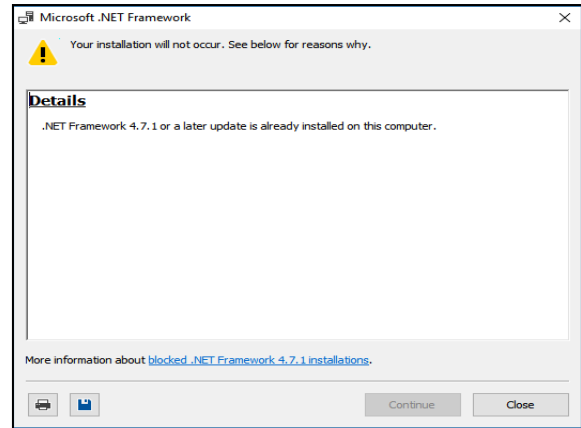
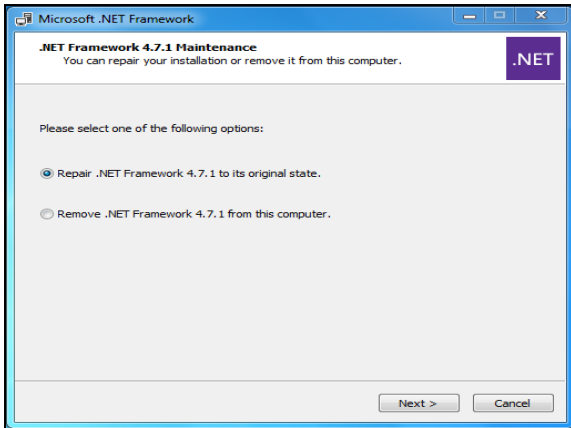


3) **Installing Microsoft .NET Framework 4.7.1**

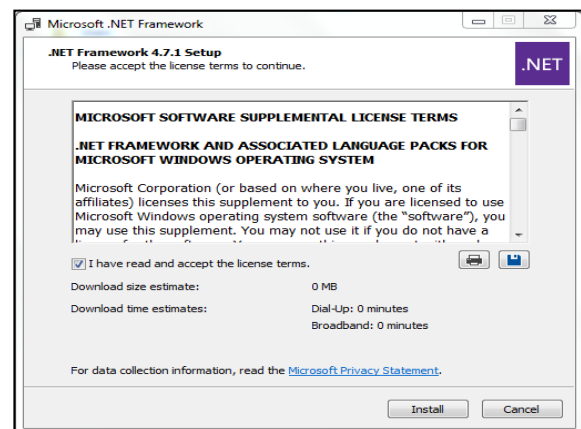
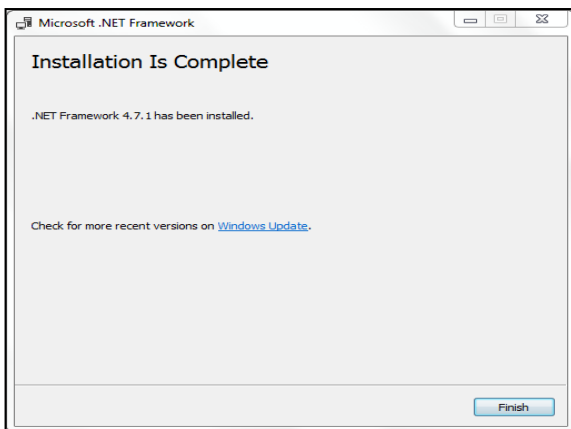
Now driver installer setup will install .NET Framework 4.7.1. User need to select **OK** to install .NET Framework or **Cancel** to discard.



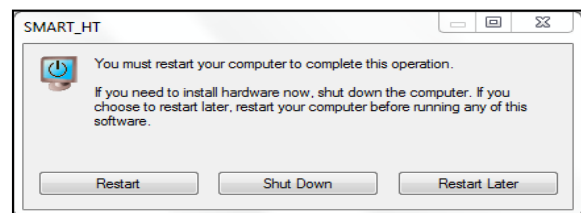
- If the .Net 4.7.1 Framework has already been installed and you attempt to run the install .Net 4.7.1 Framework, a window asking to repair or remove the .Net 4.7.1 Framework will appear. It is recommended select the **Cancel** button when this page appears. If the higher version of .NET Framework is present in the client PC, then it will automatically proceed to the next level OR may be promote as a warning as shown. It is recommended select the **Cancel** button when this page appears. If user click **OK** button, setup will execute and extract to a suitable place.



- Installer will appear Microsoft software license term. Read the license, accept it, and click on **Install**. When the Installation Is Complete screen appears, click **Finish** to exit the wizard.



- You may be prompted to restart your computer dialog box when the SMART-HT software has been successfully installed. Click on the **Restart**. It is recommended to restart your system after installation to update a DLL that is loaded in one or more processes that are required by Windows or makes changes to the registry.



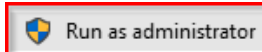


## 4. Basic Operation

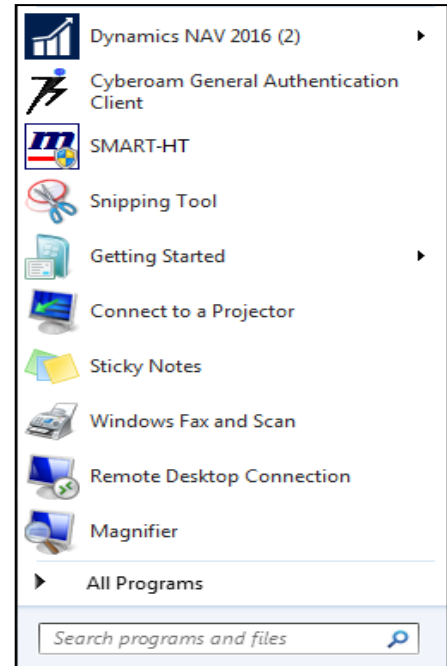
This article explains the basic operation of software along with the procedure of data acquisition.

### 4.1 Starting the Software

To begin, launch the software by simply double clicking the desktop icon, or clicking the icon in the All Programs in the Start Menu. If application shortcut will not show as below with administrator access, you have to right click on it if you use a mouse and keyboard device. If you use a touchscreen, just press on the shortcut and hold. You should be able to see, an option

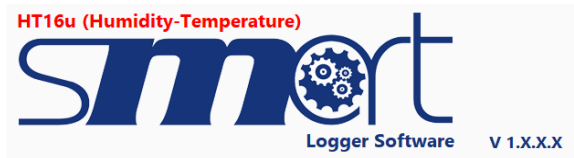


that allows you to run as administrator. If you run the application from an account without administrator permissions, the UAC prompt will ask you to enter the administrator password. If you do not provide the password, the program will not be launch.



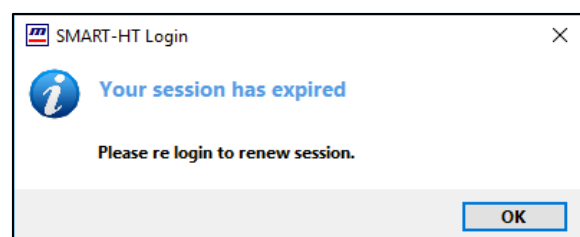
#### 4.1.1 Startup Screen

- Startup screen will display current version of the software. The second figure shows the SMART-HT in the windows toolbar. Once the software is open, the user can make all preference changes that are necessary.

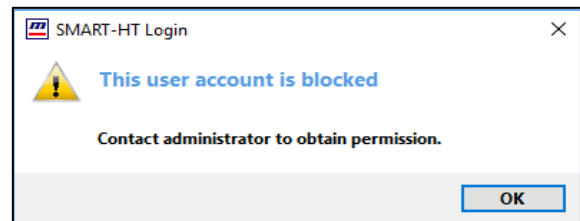
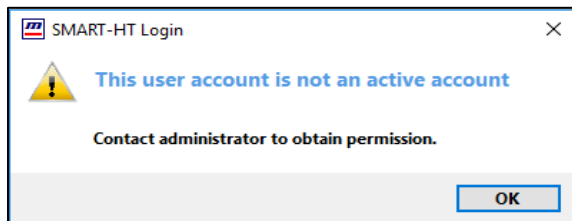


#### 4.1.2 User Login

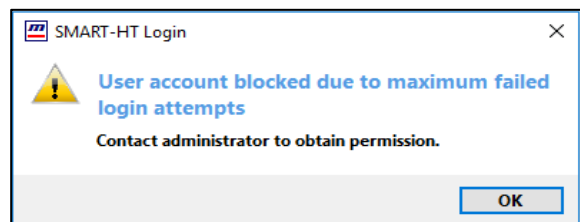
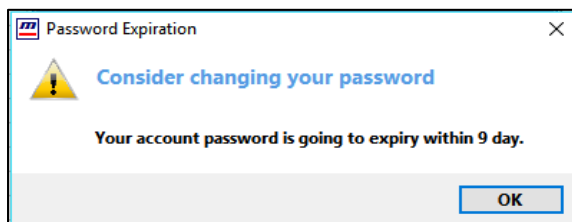
- On starting software, following Login To Access screen will be display (from shortcut). Users who fail to authenticate within 60 seconds, the timeout period expires, and the user is allow retrying authentication by again launch the software as discussed above or click on shortcut. Enter correct Username and Password, press **Login** to go to the main screen. Press **Close** to exit from the SMART-HT if software launch.
- Default Username and Password - **Admin**.
- On first login user need to change their password with required minimum complexity.



- If windows cannot access database by any of the reason as if the database folder has not been set up for read/write access to the user (*access permission denied*), database cannot access, this problem is most likely related to access rights provided to database converter by your operating system in such cases the error message should display.
- If the user does not have an active account or permission and if account is blocked then the following message should display. To login the user must have active account with necessary access rights.



- If user account password will be expiring, within next 10 days it will shows notification message on particular user login and every day at 10:00 am until the password is changed or expired. The user account is block after a specified number of consecutive failed login attempts.

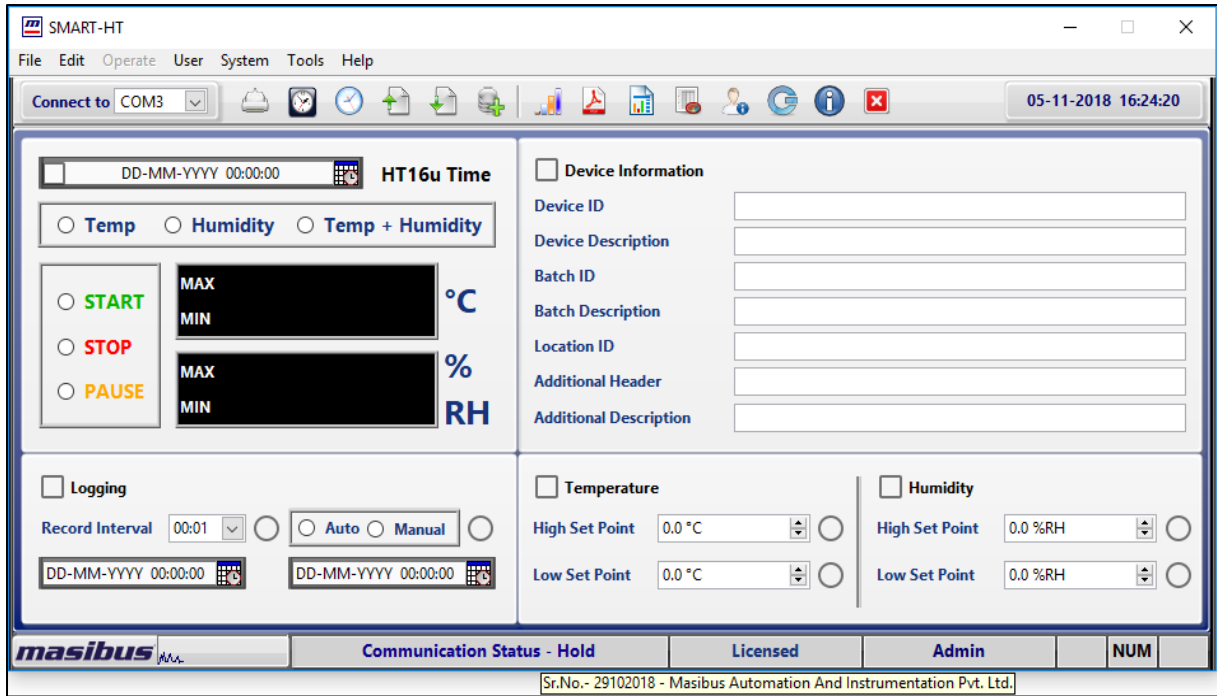


- User should be auto logout if remain idle for defined time interval, the data monitoring will be continue after user logout. To make change or access software user need to login and will only access those features of software, which will be assign to their user groups.
- The detailed user account features will be explain later in the user management section.

**4.1.3 Getting Started**

- After enter correct username and password user will redirect to following main screen if software is launching, user access software as per there access rights assigned. Each section of the software will be explain briefly in the following pages. Users with assigned access control level can configure initial setup or make necessary changes.
- Software will run in following two modes
  1. **Demo:** This is a free version of software without data export features.
  2. **License:** Using USB flash drives, a software protection dongle (*commonly known as a dongle or key*) to access-licensed version of software with data export features.
- Thank you for purchasing SMART-HT. This getting started guide describes how to use SMART-HT. This article describes the simple systematic procedure for initially preparing the software with your host computer.
 

**Note:** An alternative way to make sure the key's serial number is correct is to roll mouse on License info taskbar. The program will show tip tool with all information of key, which will, attached to the computer via the USB interface as shown below.



## 4.2 Menus and Toolbar

Within the first upper tab titled, many different options appear. Below is a brief description of every item.

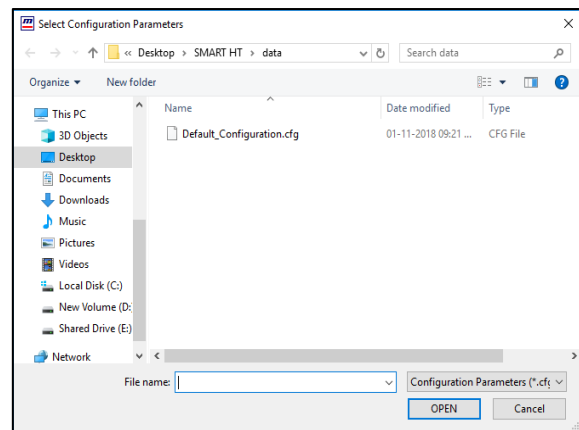
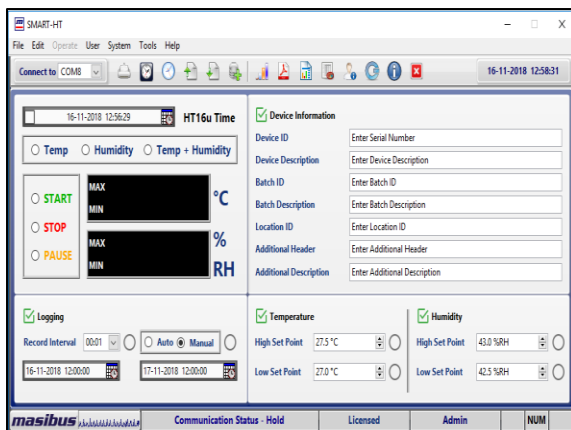
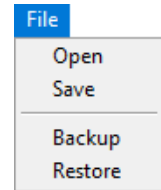


### 4.2.1 File Menu

- The File Menu offers following commands.

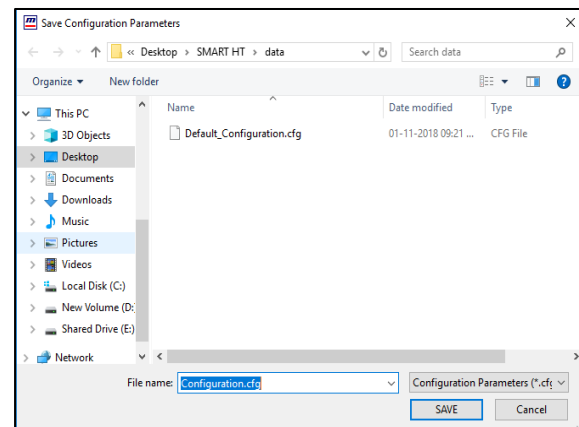
#### Open

- Use this command to open the previously saved device configuration from the file. It includes the Device Information, Logging, Temperature and Humidity Set Points value.



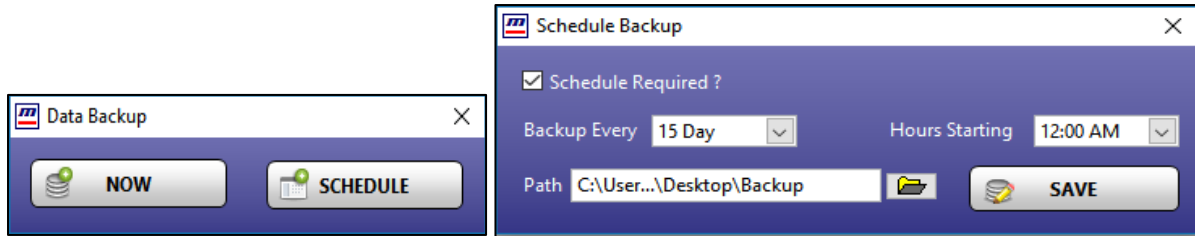
#### Save

- You may save the configuration you have as a file. This configuration file can be use in the future with a single click. This allows you to load device settings and quickly download with the same settings in multiple device.



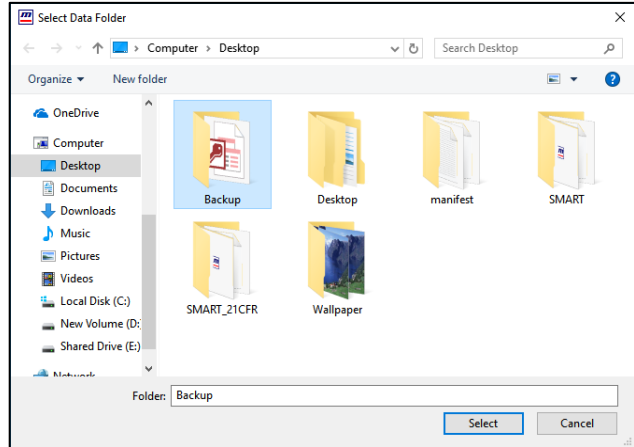
#### Backup

- Use this command to backup data, the result of copying or archiving files and folders for the purpose of being able to restore them in case of data loss. Many things ranging from computer viruses to hardware failures to file corruption to fire, flood, or theft (etc.) can cause data loss. Software backup features will take batch data backup. It will overwrite to the existing data of selected backup folder if exist.
- There are two option to backup data, when user click on command following option window will appear as shown in image 1. **NOW** will redirect to select path where user need to store data. Just select folder path and backup process will start. **SCHEDULE** will redirect to schedule backup window where user can configure required details as shown below and save. At Hours Starting, time of Backup Every Day It will take silent auto backup data to selected path.



### Restore

- Use this command to backup data will restore again to SMART-HT, the process of copying backup data from secondary storage and restoring it to its original location. Several circumstances lead to the need for a data restore. One is human error, where data has accidentally deleted or damaged. Other circumstances include malicious attacks where data is exposed, stolen or infected; power outages; manmade or natural disasters; equipment theft, malfunctions or failures; or firmware corruption. Data restore features will replace to the existing data in SMART-HT if exist.
- When user click on command following window will appear as shown in image to select backup folder, after it will redirect to restore data.



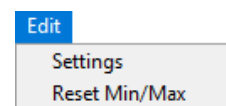
### Exit

- Use **Exit** button to end your session.
- This action will terminate all services associated with SMART-HT software. When user clicks on exit, first it will ask for the login password (Access password).
- Access password** - To prevent from unauthenticated users, some critical configuration, and exit needs to enter login password to access this functionality. When user enter correct password, it will close the application.



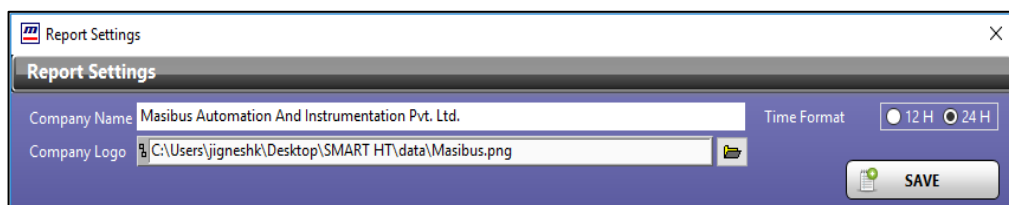
### 4.2.2 Edit Menu

- The Edit Menu offers following commands.



### Settings

- Use this command to edit the details of the Company Name and Logo path, which will be print in the report. Time format for View, Report and Trend in 12 and 24-hour format.

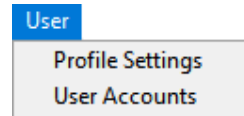


**Reset Min/Max**

- Reset Min/Max allows you to set the minimum and maximum value of device to current value. This action will clear min-max value of respective sensor display from data-logger. After min-max reset data-logger start sorting new fresh Min & Max value from sensor.

**4.2.3 User Menu**

- The User Menu offers following commands.

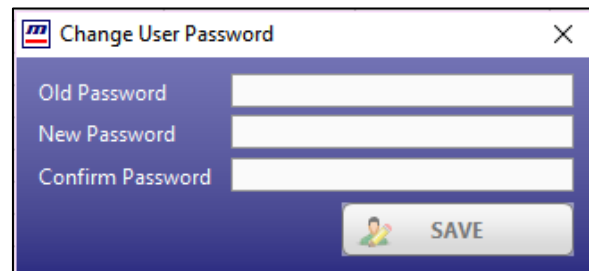


**Profile Settings**

- When login user want to change their password , click on the Profile Settings, below window will appear. Now enter the Old password and New password . Enter the same password in the Confirm password box which you have entered in the New password box. Now click on the **SAVE** to change the password. User must meet password complexity requirements.
- User can not repeat their last 10 used passwords.

The password contains characters from three of the following categories with minimum eight characters:

- Uppercase letters of European languages (A through Z characters)
- Lowercase letters of European languages (a through z characters)
- Base 10 digits (0 through 9)
- Non-alphanumeric characters (special characters) (for example, !, \$, #, %).



**User Accounts**

- Only administrator user has the access rights to view and update the user details. When click on User Accounts menu, user can view the following screen.

ID	User Name	Groups	Designation	Blocked ?	Active ?	Lockout Try
1	Admin	Administrator	Administrator Account	No	Yes	10
2	User1	Maintenance	Maintenance Account	Yes	Yes	5
3	User2	Supervisor	Supervisor Account	No	Yes	10
4	User3	Manager	Manager Account	No	Yes	10
5	User4	Operator	Operator Account	No	Yes	10

- User can view details of existing user accounts, create new user accounts, edit or delete any user accounts.
- User can create maximum 1000 user accounts and assign different access levels user groups like administrator, maintenance, manager, supervisor or operator to those accounts.
- Accounts have facility to configure Lockout Try, Account Expiry and Automatic Logout time as discussed earlier in login section. In addition, you can assign individual E-signature to user accounts as shown below which will be use at time of report / trend data export.

- Software provides an implementation of two distinct identification components such as a unique combination of user name and password for users with assigned electronic signature. In SMART-HT, the first signings always performed by the two identification components (user name/password) and all subsequent signings performed using one identification component (pincode).
- It is strongly recommend that the end customer shall prohibit the use of an individual's electronic signature by anyone other than its genuine owner. Password data cannot be retrieve from the software.

- Since an administrator account is required to create other user accounts, you are assure to have at least one administrator account in your software.
- The Administrator account has full control of the software and can assign other user access rights as shown in below image. The user accounts with user groups can only access those features of software for which the user groups have access rights.
- User can manage MEANING list which will be used while sign the report documents, when user click on button following window will open. User can create or delete meaning as per requirement.

User Groups Authorization	Maintenance	Manager	Supervisor	Operator
Access to Closed Main Window	✓	✓	✓	
Access to Open/Save Device Configuration	✓	✓	✓	
Access to Settings	✓	✓	✓	
Access to Resetting the Min/Max value of the Device	✓	✓		
Access to Change Own Password	✓	✓	✓	✓
Access to Upload Device Configuration	✓	✓	✓	
Access to Download Device Time	✓	✓		
Access to Download Device Sensor Type	✓	✓		
Access to Download Device Logging Status	✓	✓	✓	
Access to Download Logging Information	✓	✓		
Access to Download Alarm Set Points	✓	✓		
Access to Download Device Information	✓	✓		
Access to Retrieve Logged Data from Device	✓	✓		
Access to Trend Window	✓	✓	✓	✓
Access to Data Report	✓	✓	✓	✓
Access to Alarm Report	✓	✓	✓	
Access to Audit Report	✓	✓		
Access to Export data to a file formats	✓		✓	✓

#### 4.2.4 System Menu

- The System Menu offers following commands.



**Lock**

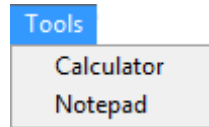
- System Lock allows you to lock your desktop so that no other users may use your computer.

**Unlock**

- System Lock will lock straight away and when the click on this command and enter correct password, it will unload itself from memory.

**4.2.5 Tools Menu**

- The Tools Menu offers following commands.



**Calculator**

- Use this command to open the Calculator form SMART-HT software to do some calculation regarding values of incoming data.

**Notepad**

- Use this command to open the Notepad form the SMART-HT software to write and store something related to data and trend.

**4.2.6 Connect Device**

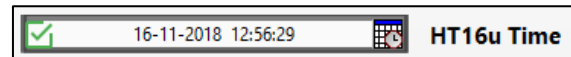


- By clicking this command user can start and stop communication with device.
- You need to start communication on different occasions as follows:
  - Retrieve batch data from device.
  - Logging need to be start or stop in device.
  - Device time modified.
  - Modification required in device settings.

**4.2.7 HT16u Time**



- By clicking this command user can upload and download device time. User can select time OR direct download system time by select check on left side in time stamp.



**4.2.8 Device Configuration**

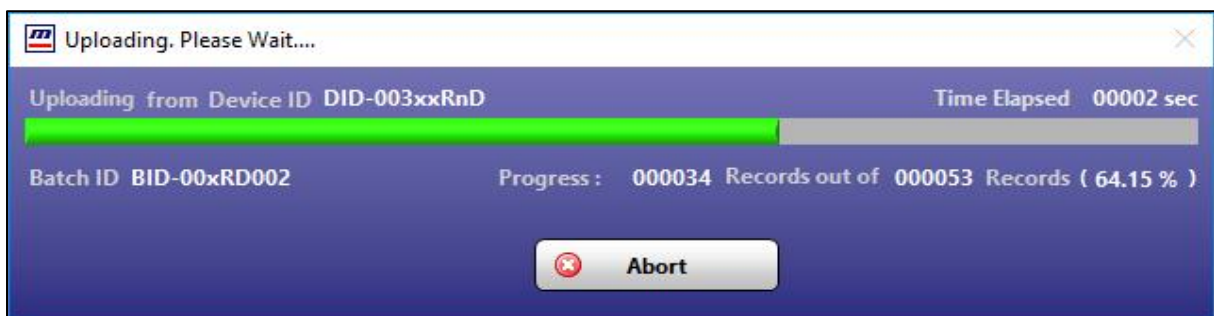


- By clicking this command user can upload and download Device Information, Logging, Temperature and Humidity Set Points in connected device. User need to select and check individual parameters to download and select individual group to upload the configuration.

**4.2.9 Retrieve Batch Data**



- This feature is allow to upload logged data from device. The uploaded data will be available in Data Report and Trend until not deleted permanently by user.
- The data is stored with Device ID and Batch ID combination; if already data exist then software give an option to skip OR delete present data (delete feature is only accessible by administrator user).

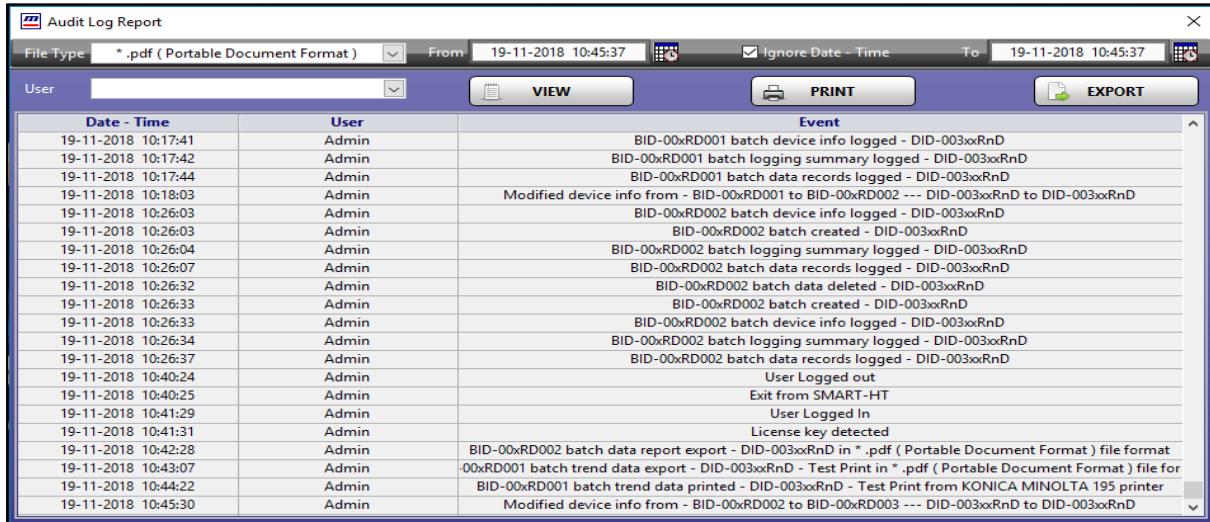




#### 4.2.10 Audit Report



- This report is create for all audit data for selected time interval.
- The Audit Report wizard window will pop up as below using Audit Report wizard. An **audit trail** (also called **audit log**) is a security-relevant set of records that provide documentary evidence of the sequence of activities that have affected at any time a specific operation, procedure, or event. You have to select the time interval to viewing, print or exporting the data. A report can be export to a file in the internal hard disk. User can filter out audit data by selecting proper filter value.



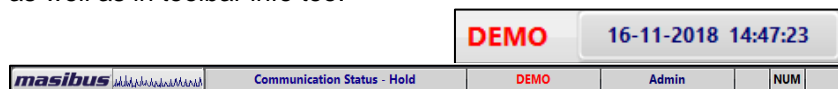
#### 4.2.11 Logout



- Use this command to end your session.
- This action will terminate all access rights associated with user account. User need to logging to access SMART-HT software.

#### 4.2.12 Demo

- SMART-HT application software has been license with a hardware key. However, the application can be use without a hardware key in a demonstration (Demo) mode, which is limited to block data export functionality. The screen similar to the following, you can see that demo in the right pane as well as in toolbar info too.



#### 4.2.13 System Time

- System date and time represents a computer system's notion of the passing of days and time on the calendar.

#### 4.2.14 Operate

- This menu is reserve for future use.

#### 4.2.15 Help



- The Help Menu offers help command; use this command to view user guide, features and functionality of SMART-HT software. For further information described in this manual, please contact at [support@masibus.com](mailto:support@masibus.com).

### 4.3 Task Bar Information

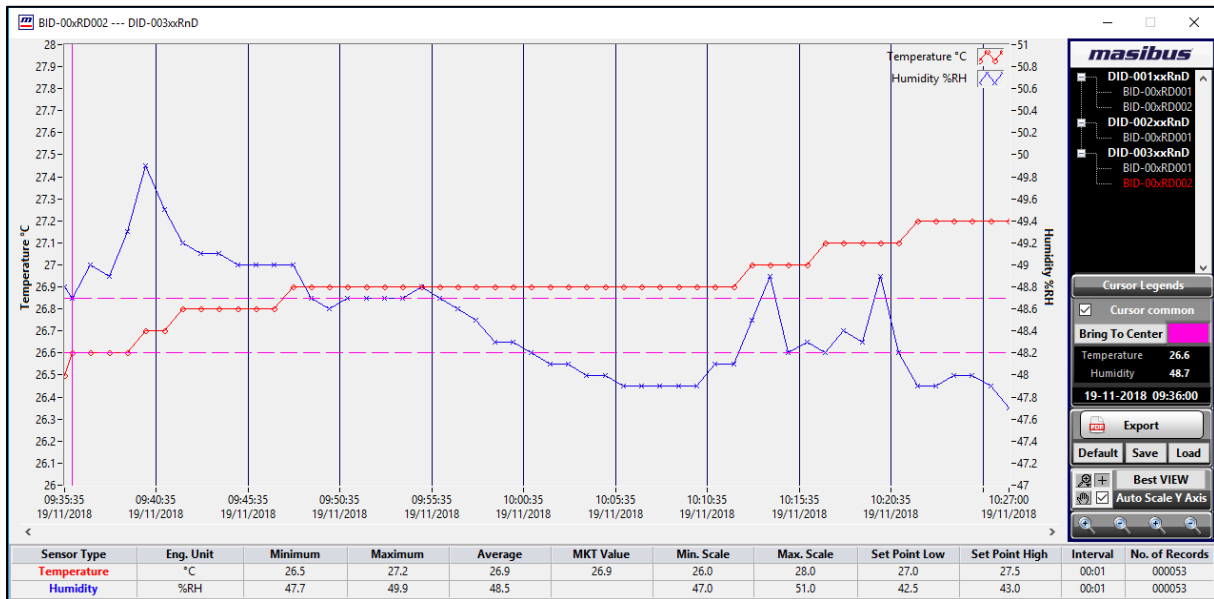
The frequently used information are prepared in Task Bar. It contains mainly Communication Status, Licensing, Login details and PC Key Status.



- **Communication Status:** On the status bar, a text indicates its health status; Good shows SMART-HT communicating with devices where Error shows there is an error while Hold shows no communication initiated by user.
- **Software License:** It will display software license information, "Licensed" in the info bar.
- **Login User Details:** It shows the login Username detail.
- **Caps Lock Status:** Caps Lock is a button on a keyboard that changes if a letter should be capitalize or not. It is located in the position of a similar Shift lock key (*and sometimes a Ctrl key*) found in some other keyboard layouts.
- **Num Lock Status:** Num Lock or Number Lock is a key on the numeric keypad of most computer keyboards. It is a lock key, like Caps Lock and Scroll Lock. Its state (*on or off*) affects the function of some of the keys, and is commonly displayed by an LED built into the keyboard.
- **Scroll Lock Status:** Scroll lock is a lock key (*typically with an associated status light*) on most IBM-compatible computer keyboards. Depending on the operating system, it may be used for different purposes and applications may assign functions to the key or change their behavior depending on its toggling state.

## 5. SMART-HT Trend

SMART-HT provides two types of display for data view. These are trends and tabular. A trend log is a collection of time-stamp values. A trend type display is used for bar or line graph for one or more parameters.



- **Display Properties** - Display properties are specified for each individual sensor. By default, software assigns a separate color to each of the sensor and all other properties are same.
- **Auto Scale Axis (Locking the Vertical Scale of a Graph)** - You use the auto range function to automatically adjust the trend y-axis according to the range of the series displayed. The vertical scale of a graph can be lock to prevent any automatic adjusting from occurring when zoom-in OR zoom-out. Any values that lie outside the displayed range will not resize the graph view.
- To navigate in the trend in small steps, you scroll the x-axis in steps equal to the displayed page of the trend.
- By double clicking on batch, from tree menu user can select or remove batch to view data in trend as shown below. The red color indicates selected batch data. You can zoom in to enlarge the scale of the trend to make the reading easier.
- The trend contains many tools for easy navigation in the chart. You can scroll or use the predefined settings to focus on the time span you want to see.
- You can export/print a trend chart using the Export button.
- Minimum, maximum, average and MKT values are calculations based on the recorded data for that parameter for selected time only.
- User also Save and Load trend custom configuration settings at any time as shown in above trends. Up to six such configuration settings can be save. When user can make there custom configuration in trend, click on **Save** button the trend file selection window will open. While click on **Load** button and select file to apply previously save configuration. The **Default** option will set configuration settings to factory default.

## 6. SMART-HT Report

SMART-HT report is use for displaying and exporting archived batch data. No database server, no SQL programming, no report designer but still you have all those reports.



- The Data Report wizard window will pop up as below using Data Report wizard. You have to select the batch to viewing or exporting the data. A report can be export to a file in the internal hard disk. User can export report in PDF file. User also directly print report data from software.

The screenshot shows the 'Data Report' window with the following sections:

- Available Batch:** A tree view showing three batches: DID-001xxRnD, DID-002xxRnD, and DID-003xxRnD. The second batch under DID-003xxRnD is selected.
- Device Information:**
  - Device ID: DID-003xxRnD
  - Batch ID: BID-00xRD002
  - Location ID: RnD Dept.
  - Device Description: Rnd Testing Device
  - Batch Description: Normal Room Testing
  - Tested By: Jignesh Kalola
- Logging Summary:**
  - Sensor Type: Temperature+Humidity
  - Start Mode(Set): Manual
  - Start Time: 19-11-2018 09:35:35
  - Lowest Temperature: 26.5 °C
  - Lowest Humidity: 47.7 % RH
  - Record Interval(HH:MM): 00:01
  - Start Mode(Actual): Manual
  - End Time: 19-11-2018 10:27:00
  - Highest Temperature: 27.2 °C
  - Highest Humidity: 49.9 % RH
  - No. of Records: 53
  - Stop Mode(Actual): Running
  - MKT: 26.9 °C
  - Average Temperature: 26.9 °C
  - Average Humidity: 48.5 % RH
- Alarm Summary:**

Set Point Type	Temperature Low	Temperature High	Humidity Low	Humidity High
Set Point Value	27.0 °C	27.5 °C	42.5 % RH	43.0 % RH
First Alarm Triggered	19-11-2018 09:35:35	-	-	19-11-2018 09:35:35
No. of Alarms Triggered	00001	00000	00000	00001
- Marked Events:** A table with columns: Serial Number, Date - Time, Temperature Value(°C), Temperature Alarm, Humidity Value(% RH), Humidity Alarm.
- Data Records:** A table with columns: Date - Time, Temperature Value(°C), Temperature Alarm, Humidity Value(% RH), Humidity Alarm, Events.
 

Date - Time	Temperature Value(°C)	Temperature Alarm	Humidity Value(% RH)	Humidity Alarm	Events
19-11-2018 09:35:35	26.5	Low	48.8	High	START
19-11-2018 09:36:00	26.6	Low	48.7	High	-
19-11-2018 09:37:00	26.6	Low	49.0	High	-
19-11-2018 09:38:00	26.6	Low	48.9	High	-
19-11-2018 09:39:00	26.6	Low	49.3	High	-
19-11-2018 09:40:00	26.7	Low	49.9	High	-
19-11-2018 09:41:00	26.7	Low	49.5	High	-
19-11-2018 09:42:00	26.8	Low	49.2	High	-
19-11-2018 09:43:00	26.8	Low	49.1	High	-

- When data print OR export, it will ask to sign documents, on confirmation it will promote available e-Sign list and Meaning. User also insert additional comment if any as shown in image 1.
- Access password** - To prevent from unauthenticated users, it needs to enter user name and e-sign pincode to access this functionality shown in image 2. When user enter correct password it will sign document as shown in image 3 at bottom of report page.

The 'Select e-Signature' dialog box contains the following fields:

- Select e-Sign: Peter
- Select Meaning: Review
- Comment: Need to Approve before Release
- PROCEED button

The 'Enter User details' dialog box contains the following fields:

- User Name: [Empty]
- Pincode: [Empty]
- PROCEED button

Name of Signee: Peter  
 Title of Signee: QA Analyst  
 Meaning: Review  
 Comments: Need to Approve before Release 09-10-2017 - 05-40-55 - PM

- Alarm Report**  
This menu is reserve for future use.
- The Alarm Report wizard window will pop up using Alarm Report wizard.



## 7. Software License Agreement

---

Software License Agreement the following License Terms govern your use of the accompanying Software unless you have a separate signed agreement with Masibus Automation And Instrumentation Pvt. Ltd. ([www.masibus.com](http://www.masibus.com))

SOFTWARE LICENSE NOTICE TO ALL USERS: CAREFULLY READ THE FOLLOWING LEGAL AGREEMENT ("AGREEMENT"), FOR THE LICENSE OF SPECIFIED SOFTWARE ("SOFTWARE") BY **Masibus Automation And Instrumentation Pvt. Ltd.** ("Masibus" "Our" OR "We"). BY USING THE SOFTWARE, YOU (EITHER AN INDIVIDUAL OR A SINGLE ENTITY) ACKNOWLEDGE THAT YOU HAVE READ THIS LIMITED WARRANTY, UNDERSTAND IT, AND AGREE TO BE BOUND BY ITS TERMS AND CONDITIONS. IF YOU DO NOT AGREE TO ALL OF THE TERMS OF THIS AGREEMENT, DO NOT INSTALL, ACCESS OR USE THE SOFTWARE. (IF APPLICABLE, YOU MAY RETURN THE PRODUCT TO THE PLACE OF PURCHASE FOR A FULL REFUND.)

### LICENSE GRANT

Subject to the payment of the applicable license Fees followed by the activation of software from Masibus, and subject to the terms and conditions of this Agreement, We are pleased to grant you a personal, non-exclusive, non-transferable right to use the Software and the accompanying documentation (the "Documentation"), if you follow all restrictions in all sections of this agreement. This license is edition specific, which allows or restricts the use of different options/features based on the purchased or complementary edition. Except as set forth below, you may only install one copy of the Software on one computer, workstation or other electronic device for which the Software was designed (each, a "Client Device"). "Software" means (a) all of the contents of the files (delivered electronically or on physical media), or disk(s) or other media with which this agreement is provided. "Use" or "Using" means to access, install, download, copy, or otherwise benefit from using the functionality of the Software. If you accept the terms and conditions of this Agreement, you have certain rights and obligations as follows: You may:

1. Install and use the Software on any number of computers.
2. Make a copy of the Software for archival purposes, if required.

### TERM

This Agreement is effective for an unlimited duration unless and until earlier terminated as set forth herein. This Agreement will terminate automatically if you fail to comply with any of the limitations or other requirements described herein. Upon any termination or expiration of this Agreement, you must destroy all copies of the Software and the Documentation. You may terminate this Agreement at any point by destroying all copies of the Software and the Documentation.

### UPDATES

Masibus may provide free upgrades to the latest version of this software via its web site or through other online OR offline services. At our discretion, we may charge an upgrade fee for new releases, which contain significant enhancements.

### OWNERSHIP

Title, ownership rights, including all copyrights, patents, trade secret rights, trademarks and intellectual property (the Software and any authorized copies that you make) rights of the Software shall remain with Masibus. Copyright laws and treaties protect this Software. Your possession, installation, or use of the Software does not transfer to you any title to the intellectual property in the Software, and you will not acquire any rights to the Software except as expressly set forth in this Agreement.

### RESTRICTIONS

You do not have any right to reproduce or distribute the Software without our permission; any such unauthorized use shall result in immediate and automatic termination of this license and may result in criminal or civil prosecution. You may not:

1. Reverse engineer or otherwise try to derive source code from the Software.
2. Adapt or modify the Software or create derivative works based on the Software.
3. Publish copy (other than backup copies), rent, lease, loan, resell, sublicense, assign or in any other way transfer the Software to anyone else.

4. Use the Software in any manner not authorized by this license.
5. Transfer any of the rights granted to you under this Agreement.
6. Remove or alter any trademark, logo, copyright or other proprietary notices, legends, symbols or labels in the Software.

**DISCLAIMER OF WARRANTY**

This software is provided "AS IS" and it is essentially capable of carrying out the functions specified in the documentation, provided it is used with the recommended operating system and the hardware configuration. Masibus disclaims all warranties, either express or implied, including but not limited to implied warranties of merchantability, fitness for a particular purpose, and no infringement with respect to the software and the accompanying documentation. You expressly acknowledge and agree that use of the software and any third party software and services is at your sole risk and that the entire risk as to satisfactory quality, performance, accuracy and effort is with you. It is at your own discretion and risk that you download and/or use the software. You will be solely responsible for any damages to your computer system or loss of data that results. Masibus makes no warranties or representations that the functions contained in the software will meet your requirements that the operation of the software will be uninterrupted or error-free, or that defects in the software will be corrected.

**LIMITATION OF LIABILITY**

Under no circumstances shall Masibus or its affiliates (including suppliers, resellers, or partners) or their respective executives, employees, shareholders or contractors be liable for personal injury, or any incidental, special, direct or consequential damages whatsoever, including without limitation, damages for loss of profits, loss of data, business interruption or any other commercial damages or losses, arising from or related to your use or inability to use the software or this agreement, however caused, regardless of the theory of liability (contract, tort, or otherwise) and even if any such party has been advised of the possibility of such damages. In no event shall 'Masibus', or its affiliates', total liability to you, for all damages exceed the amount, if any, paid by you to Masibus for the software and/or services prior to the event which gave rise to the damages in question. If the software and services are provided without charge, then there shall be no liability to you whatsoever. The foregoing is your sole and exclusive remedy for any breach. This limitation of liability shall not apply to liability for death or personal injury to the extent that applicable law prohibits such limitation. Furthermore, some states and jurisdictions do not allow the exclusion or limitation of incidental or consequential damages, so this limitation and exclusion may not apply to you. This limitation of liability for personal injury or exclusion of incidental, consequential, or direct damages, will apply only to the extent permitted under applicable law. The disclaimers and limitations set forth above will apply regardless of whether or not you accept the software, updates or upgrades.

**MISCELLANEOUS**

Masibus reserves the right to change the terms of this Agreement at any time without making those changes retroactive to past releases.

## **8. Contact Information**

---

For further information described in this manual, please contact at Masibus Automation And Instrumentation Pvt. Ltd. by phone or email:

B-30, G.I.D.C Electronic Estate, Sector - 25, Gandhinagar - 382044. Gujarat - India.

Phone: +91 79 23287275-79

Fax: +91 79 23287281

E-mail: [support@masibus.com](mailto:support@masibus.com)